

# The Culture of Moving On In Illinois

Johnna Lowe

Program Manager, CSH

At Large Board Member, SHPA

# About CSH

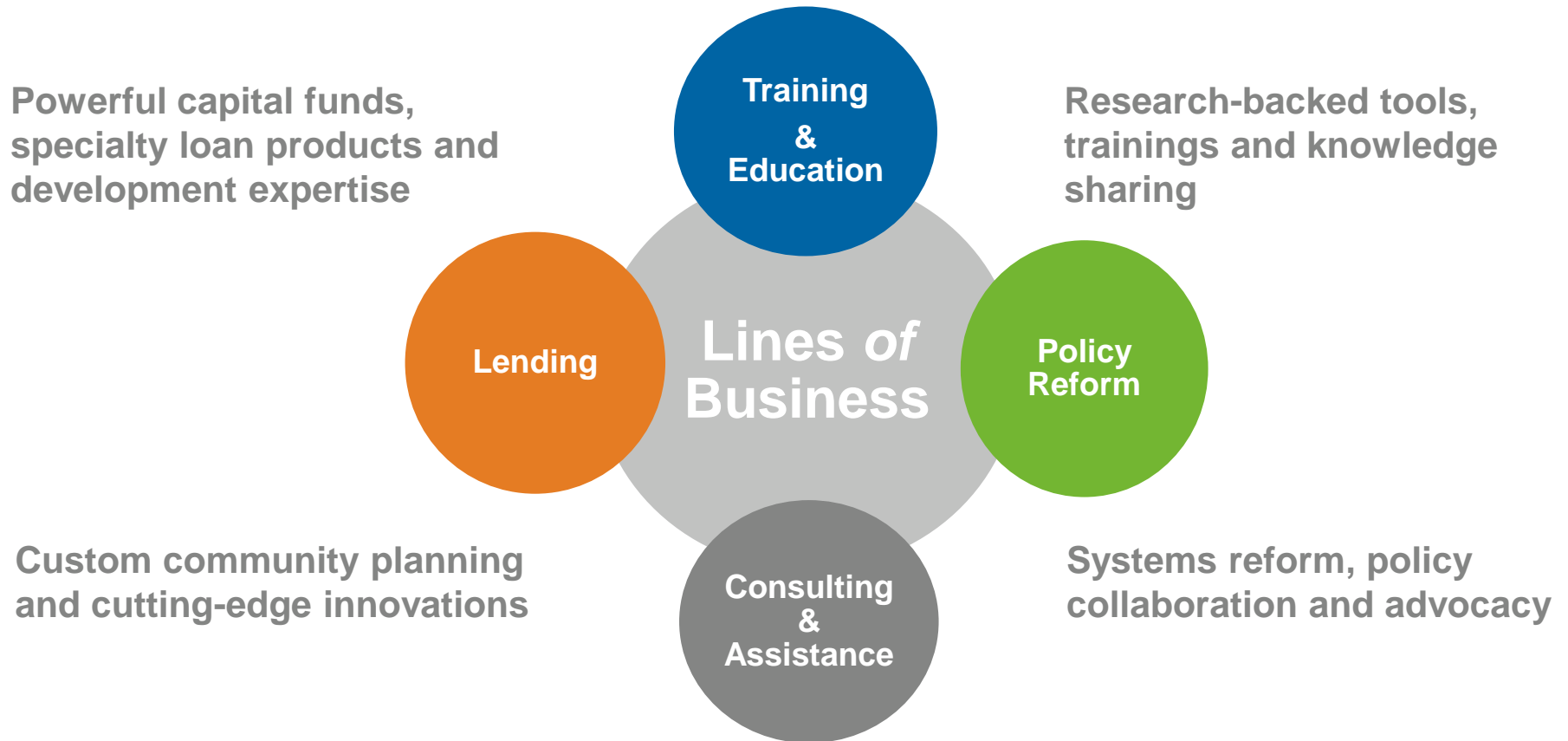
# Maximizing Public Resources

CSH collaborates with communities to introduce housing solutions that promote integration among public service systems, leading to strengthened partnerships and maximized resources.

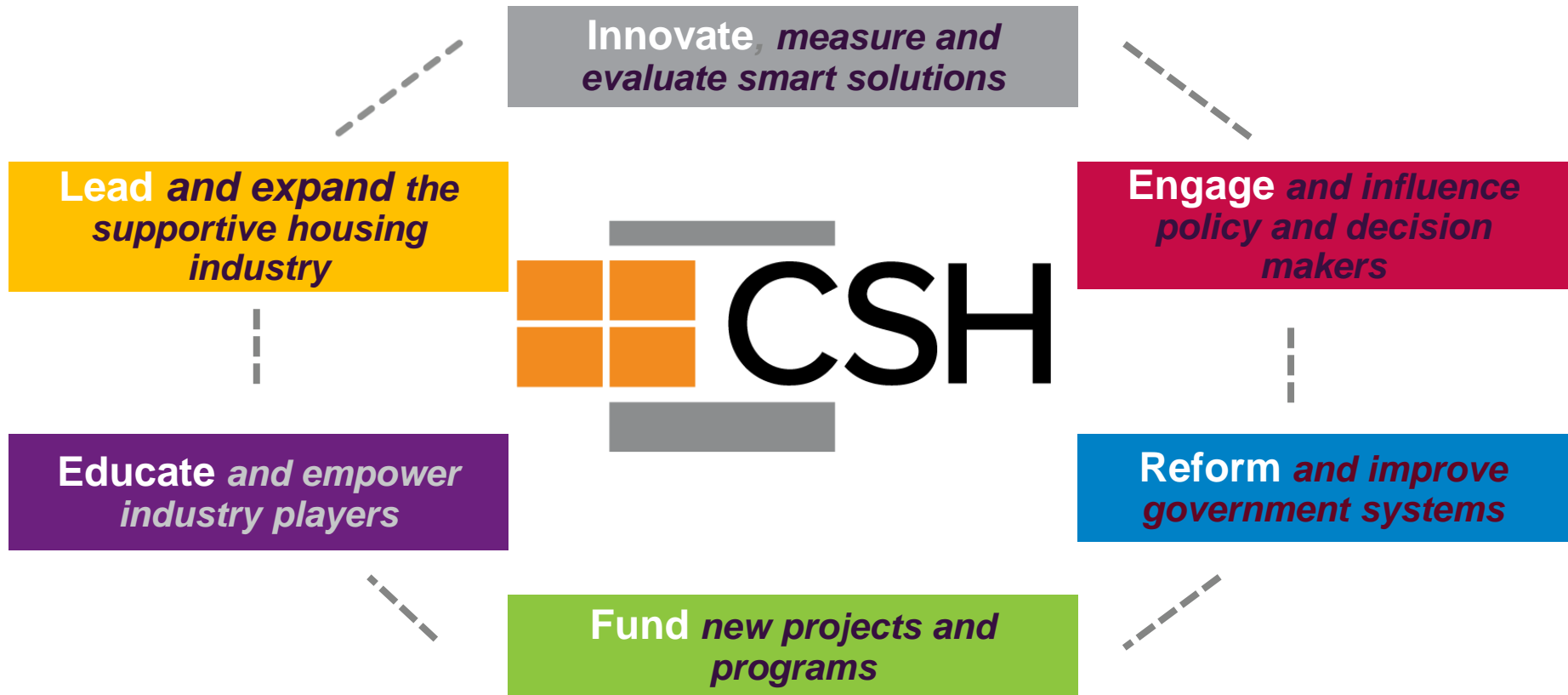


# What We Do

CSH is a touchstone for new ideas and best practices, a collaborative and pragmatic community partner, and an influential advocate for supportive housing.



# How We Drive Impact



# Introductions

- Name
- Agency and location
- Experience with Moving On program



# What is Moving On?



**Moving On (MO) is a program that supports people who are living in supportive housing to move into affordable housing. It is understood that many tenants who have lived in supportive housing for a longer period of time no longer need the intensive support services they once needed, but the affordable components to supportive housing are key in their continued success in being stably housed. This program allows those tenants to move on and access affordable housing through the Chicago Housing Authority's Housing Choice Voucher program. Once tenants have moved on, the agency can then utilize that unit to house someone who is currently experiencing homelessness.**

# Who is Moving On for ?



- **Tenants who have at least a two year history of housing stability in their supportive housing units**
- **Tenants who have a more independent relationship with their supportive services,**
- **Tenants who have an income/debt ratio that would support their housing stabilization are eligible for MO.**



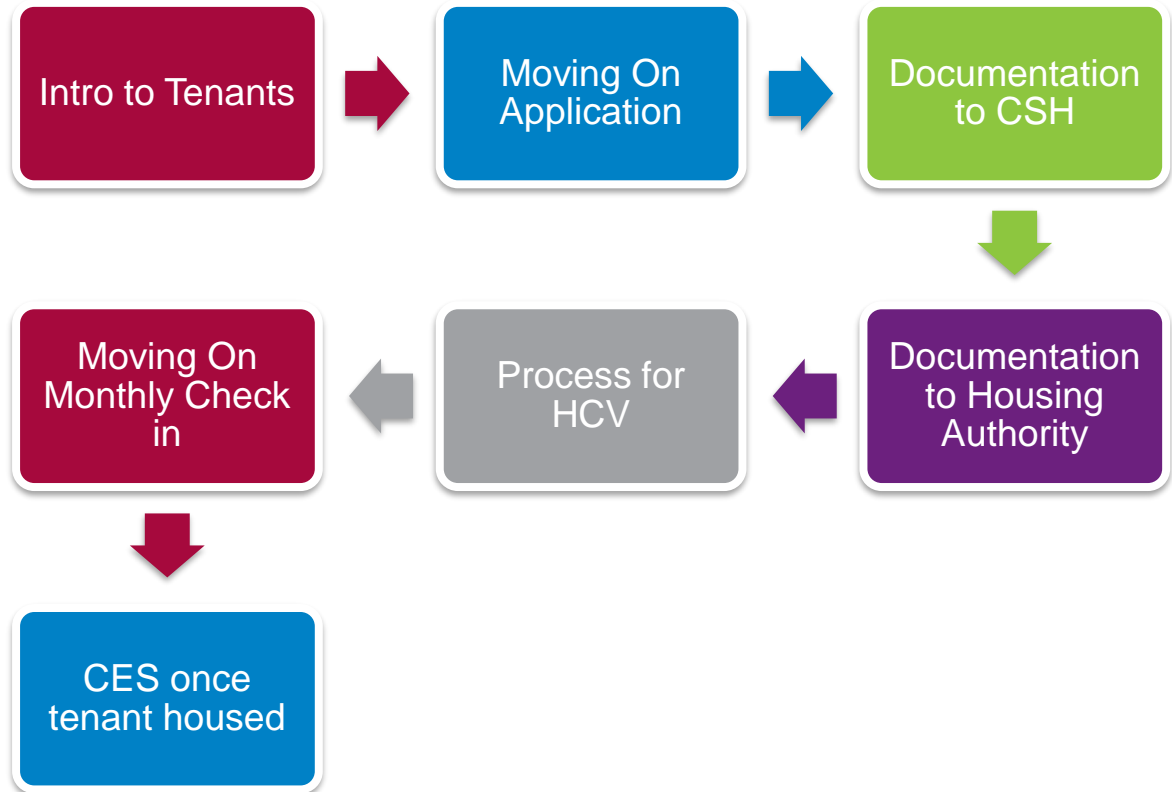
# Overview

- **Partnership between Chicago Housing Authority (CHA), CSH, and Supportive Housing Providers**
- **CHA**
  - **Provided 150 Housing Choice Vouchers**
    - **Started with PBV/SH Residents only**
    - **Now open to all COC participants and scattered site tenants**
- **CSH**
  - **Initiative facilitator and intermediary**
  - **Tracking and evaluation**
- **Supportive Housing Provider**
  - **Assessment and follow-up**
  - **Advocacy/Support in the process**

# Chicago's Assessment tool

- **Areas of Focus**
  - **Financial Stability & Obligation**
  - **Current Housing Standing**
  - **Healthcare goals**
  - **Relationship with community supports**
  - **Harm Reduction/Crisis Prevention**
- **Sliding Scale Assessment**
- **Supportive documentation from property management and service provider/case manager**

# Work Flow



# Incentives

- **For Participant**
  - **Mobility Counseling Program**
    - **Orientation to HCV process**
    - **Support in identifying units in an Opportunity Area**
    - **\$500 grant as incentive for moving into Opportunity Areas**
      - **Policy Change in 2015 commitment, Families only**
- **For SH Providers**
  - **Providers fill units from the city's coordinated access homeless waitlist**
- **For System**
  - **Movement in access to supportive housing in the community**
  - **Affordable housing is a partner in COC/CES work**

# Challenges & Barriers

- **Autonomy of the incentive**
  - **3<sup>rd</sup> party entity providing the \$500 stipend**
- **Reporting**
  - **Relationship transitions from SH Provider to community supports**
- **Saturation of general housing stock**
- **Withdrawals**
  - **Affordability of moving**
  - **Search near current housing**
- **Increasing participants in Opportunity areas**

# In My Backyard!



- **Snapshot of affordable housing in our area**
- **Who are the partners?**
  - **Housing Authority?**
  - **Low Income Housing Trust Fund**
  - **Who else?**

In my  
Backyard!

## Partnership

### 1. COC Approach

1. Providing the proof
2. Affordable housing membership in the COC

### 2. Advocacy

1. Agencies and Tenants
2. Involvement of elected officials
3. Creating policy to make it official

# Other Ways



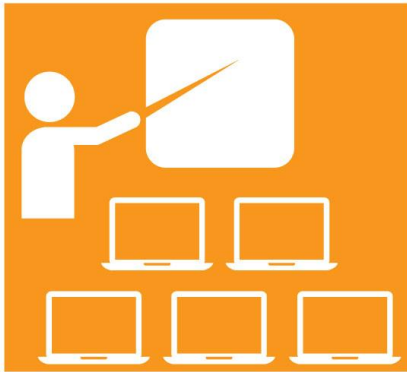
- **How else we might approach Moving On in our communities?**





# Supportive Housing TRAINING CENTER

Your Source for Professional Development



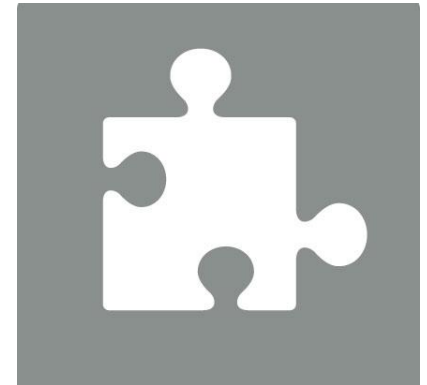
**Webinars**



**Self-Paced  
Online Classes**



**Workshops**

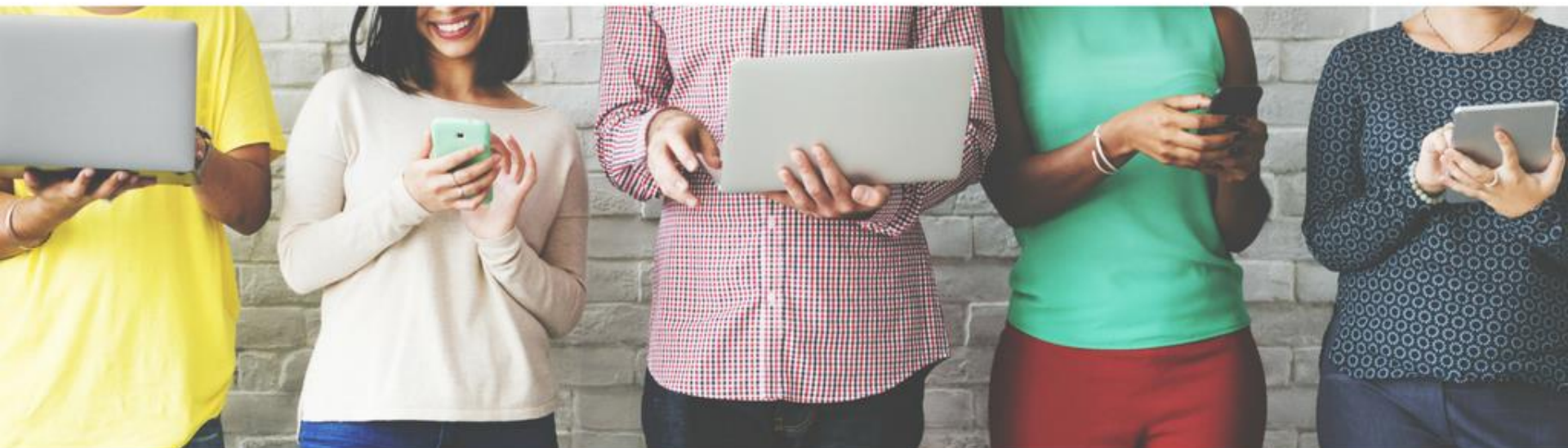


**Customized  
Solutions**

**[csh.org/training](http://csh.org/training)**

# CSH SUBSCRIPTION SERVICE

*New Resources for You*



**PROFESSIONAL  
DEVELOPMENT**

**ACCESS ALL  
CSH TRAININGS**

**CONNECT WITH  
PEERS & EXPERTS**



[CSH.ORG/TRAINING](https://www.csh.org/training)

---

# THANK YOU!

---

Johnna Lowe

[johnna.lowe@csh.org](mailto:johnna.lowe@csh.org)

312-332-6690 ext. 2817



stay connected



[csh.org](http://csh.org)